



**TONE WINNER**



**TY-50  
User Manual**

ISO9001 Certified Enterprise





TONE WINNER

## Product packing list

Number	Item	Quantity
1	Manual	1 piece
2	Power cord	1 piece
3	Certificate	1 piece
4	Remote control	1 piece

### Pollution control labels and its content descriptions

This symbol indicates the product can be recyclable. The number 10 indicates the period of environmental protection. As long as you follow the safety and precautions related to this product, it will not cause environmental pollution or impact on human property within 10 years from the date of manufacture.



Name and content of toxic or hazardous substances or elements in the product

Part Name	Hazardous substances or elements					
	Lead (Pb)	Mercury (Hg)	Cadmium (Cd)	Hexavalent chromium (Cr <sup>6+</sup> )	Polybrominated (PBB)	Biphenyls polyphenyls (PBDE)
Chassis enclosure	○	○	○	○	○	○
Electrical parts	×	○	○	○	○	○
Plastic structural parts	○	○	○	○	○	○
Metal structural parts	○	○	○	×	○	○
Cables	○	○	○	○	○	○
Transformer	○	○	○	○	○	○

Marks:

“○” means the content of the hazardous toxic substance is lower than SJ/T11363-2006 standard required.

“×” means in a homogeneous material of the component, the content of the hazardous toxic substance is higher than SJ/T11363-2006 standard required.

Note: “×” as there are no substitutable substances under the existing technology



Thank you for choosing Tonewinner audio products. We will serve you with "High technology, High quality and High taste" enterprise philosophy, will serve you with exquisite craft, classical circuit, high technologies, first-class quality and first-class services. We will bring all customers with our stable, reliable, durable and pleasant technology achievements!

**Contents :**

- 1. Important protective measures for attention-----2
- 2. Brief Introduction and Features Overview-----4-5
- 3. Front panel-----6
- 4. Rear panel-----7
- 5. Remote-----8
- 6. How to replace the battery in the remote-----9
- 7. How to use it-----10
- 8. Main Specification-----11
- 9. App instruction-----12
- 10. Problems shooting-----13

# Important protective measures for attention

	<b>WARNING</b> ELECTRIC DANGER DO NOT OPEN		<ul style="list-style-type: none"><li>■ To reduce risk of electric shock, do not remove the outer cover (or back panel).</li><li>■ For maintenance, it should be carried out by qualified maintenance people.</li><li>■ To avoid fire and electric shock hazards, do not get the unit wet or damp.</li><li>■ Safety protection category: Class II</li></ul>
---	---	---	---

1. Read the protective measures: read all warning messages about protection and operation in the instructions carefully before using the equipment.
2. Follow instructions: please follow the instructions and do not violate the instructions.
3. Place the product on where manufacturer recommends: to protect equipments overturning, do not use force to push or suddenly stop when moving.
4. Keep away from water and moisture: do not place equipment near water such as bathtub, basin, sink, washing machine, etc. Do not use equipment at high temperatures high humidity environment, such as a damp basement.
5. Cleaning: Do not use liquid or mist cleaners, please use dry cloth to clean. Turn off the machine and power off before clean the equipment.
6. Power supply: use the power supply according to indication. Should have reasonable wirings, to avoid damage, do no step. Pay special attention to power plugs, receptacles and connection wirings.
7. Ventilation: the chassis of equipment is designed with venting holes. To ensure reliable performance, please avoid overheating, do not cover the equipment. Do not use the equipment on beds, sofas, carpets etc. Newspapers, tablecloths, curtains, and other objects may block venting holes. Do no put the equipment close to window curtains. If it is built-in installation, such as bookcase or rack, make sure enough venting. Keep a distance of 10cm (4") on left, right, top and rear sides. Equipment bracket or rear of top cover should have a distance of 10 cm (4 ") to rear panel or the wall, to keep venting space.
8. Heat - to keep products away from heat sources, such as heatsinks, stoves, objects that generate heat (including power amplifiers)
9. Prevent unknown objects or liquids - objects or liquids should be prevented from falling through the holes into the equipment, because it might contact current or live parts that might cause fire or electric shock. Do not place the equipment in rain or water splashing place, do not put into water containers, such as vases.
10. Please connect well all input/output wires before power on.
11. Thunder and lightning: unplug the power cable in thunder and lightning weather, it can effectively prevent lightning impulses to protect the equipment.
12. Protections:①unplug the power supply when you do not use the manual for long period. Plug. ②Good grounding can prevent the machine from being damaged.

13. Maintenance: do not open the equipment chassis to avoid electric shock.

Please send the machine to our local designated maintenance house if you meet below circumstances and need maintenance.

- a) Unknown parts or liquid enter the machine.
- b) The equipment was soaked.
- c) Abnormal machine operation.
- d) Machine falling or machine damage.

14. Battery: for environmental protection, do not discard the waste electricity optionally.

15. Disconnection device of main power supply: this machine use power plug and coupler as the disconnecting devices. Power plug and coupler should be easily operated.



16. This product is only suitable for safe use in altitude below 2000M.



17. This product is only suitable for use in tropical climates

## **Breif Introduction:**

TY-50 is an audio playback product with multiple functions and high performance that is newly launched by TONEWINNER. It integrates CD laser player, digital player, and digital audio sources receiver and processor. It is the latest technical achievement based on TONEWINNER's accumulated years of research & design experiences in audio industry.

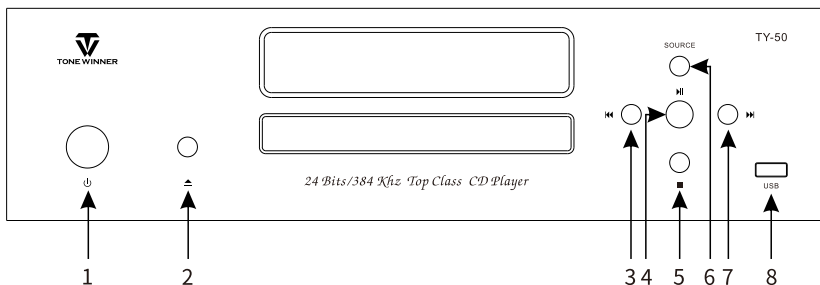
1. CD laser player playback.
2. Lossless musical signals as WAV,FLAC, APE and high compression Mp3. playback locally on T-Flash Card and USB Disk, the maximum capacity is 128G.
3. Bluetooth wireless transmission, which is low power consumption, long distance and high performance guarantee. Auto connection and reconnection is extremely stable and reliable.
4. Input of concentric and optical-fiber digital audios, the audio signal input supports a maximum sampling rate of 24 bit(192 kHz).
5. Fully remote control.
6. Mobile App control: you can browse the musical information in T-flash card and USB disk. All the multifunctional switching operations are convenient and quickly.
7. 1 way optical-fiber digital output and 1 way coaxial digital output,two pairs of RCA analog output, and one pair of balance output.
8. Power-switching of 110V~220v with powerful regional adaptation.



## Features Overview:

1. External audio source input, it applies a lot of classic chips: It applies AD1955 decoding chip, IV convert chip is OPA1656, and LPF low pass filter chip is OPA2134.
2. It applies balance transmission circuit with high common-mode rejection ratio & strong anti-interference.
3. It applies audiophile MOSFET as output differential line amplifier, which is with small distortion & sweet fine sound quality.
4. It applies linear power supply which can avoid the disturbance to the analog audio caused by switch power supply.
5. It adds electromagnetic shielding cover to the mechanism and decoding board since they will cause interference to analog audio.
6. Applies high quality high power (50W) toroidal transformer high volume capacitors for the power supply of TY-50 which guarantees the performance of the CD player.
7. For signal coupling capacitors, it applies Elna audio exclusive capacitors, which makes TY-50 has flexible and soft sound in low frequencies, mellow and warm sound in mid frequencies and permeable & delicate sound in high frequencies.
8. It applies high quality solid CD deck bracket, & it adds thick metal fixing plates and shake-proof base to the mid of the chassis & CD mechanism, thus TY-50 is as stable as a rock when playing music.

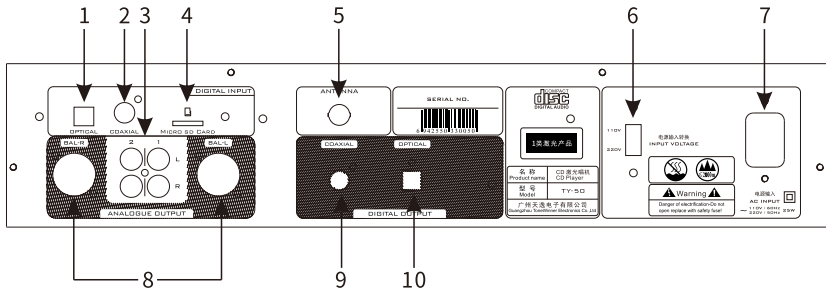
## Front panel:



1. Power switch: Press it for power on & popup for power off.
2. Open/Close tray: open or close the Disc tray.
3. Previous chapter: short press for the previous chapter and long press for a fast backward play (short press is available only for such musical resources as CD, BT, TF, and USB, and long press for fast backward play is available only for such musical resources as CD, TF, and USB).
4. Compound key of pause/play/MUTE: when the machine is set under the musical sources of CD, BT, TF, and USB, it enables the function of play or pause; when the machine is set with Coaxial or Optical-fiber input source, function of mute is enabled.
5. Stop: stop playing Disc.
6. Source select: it can play Optical Coaxial and CD sources.
7. Next chapter: short press for the next chapter and long press for a fast backward play (short press is available only for such musical sources as CD, BT, TF, and USB, and long press for fast backward play is available only for such musical sources as CD, TF, and USB).
8. USB Disk port.

Remark: Press SOURCE + STOP buttons at the same time, it will clean all the existing Bluetooth paired data in the CD player.

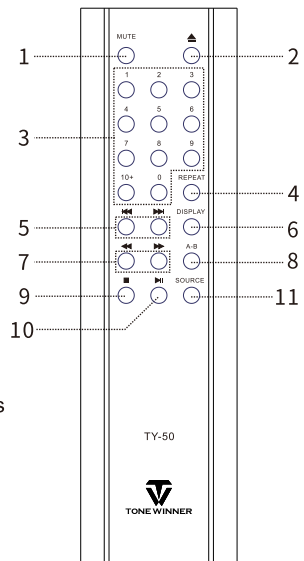
## Rear panel:



1. Optical output
2. Coaxial output
3. Analog unbalance output
4. TF card
5. ANTENNA
6. Input power switch
7. AC input (~110V/~220V)
8. Analog balance output
9. Digital coaxial output
10. Digital optical output

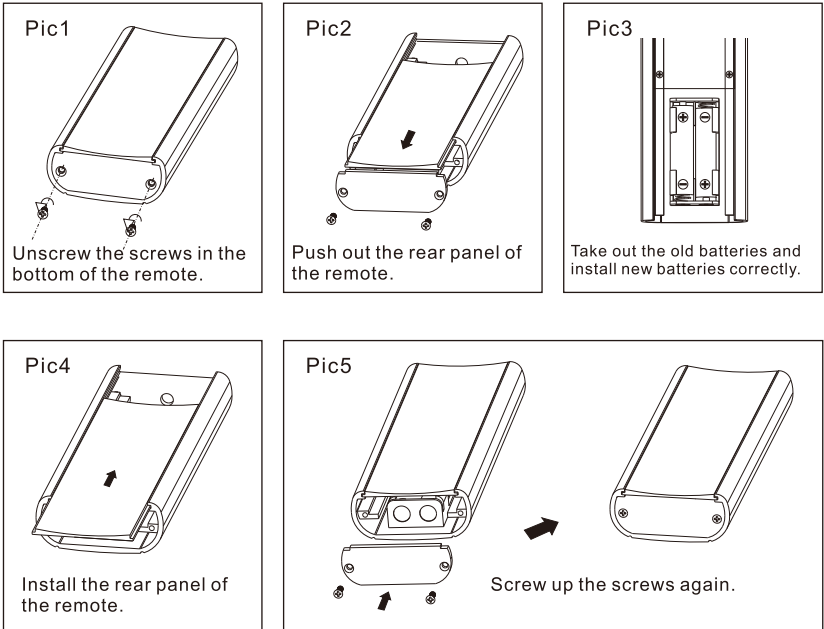
## Remote:

1. MUTE: When playing CD/BT/TF/USB sources, it is PLAY/PAUSE function. When playing OPT/COAX, it is MUTE function.
2. Open/Close tray: For control open and close of the DISC tray door.
3. Numbers for selecting the track.
4. REPEAT: Single track repeat/All tracks repeat.
5. Previous track/Next track.
6. DISPLAY: It has 3 modes, ① displaying a track's playing time, ② displaying a track's total time and ③ displaying remaining playing time.



- 7. **◀/▶** : Long press this key to enable the fast backward play/forward play (only available under the musical sources of CD/TF/USB).
- 8. A-B: Selected part repeat.
- 9. Stop.
- 10. **⏸** (Pause)/play: The compound key of play/pause/mute (when the machine is set under the musical sources of CD, BT, TF, and USB, it enables the function of play and pause; when the machine is set under the musical sources of COAX/OPT, the function of mute is enabled);
- 11. SOURCE 3 options of: Optical, Coaxial and CD .

**Remote battery replacement:**



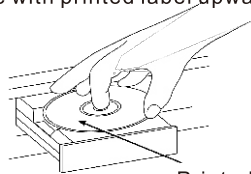
# How to use your TY-50 CD player:

## Power ON/OFF:

- For the first time use, please make sure the working voltage is set correctly as your country's voltage. If not, please set the voltage switch same as your country's voltage. Please make sure to disconnect the electricity of the CD player before you change the voltage set to avoid fuse burns.
- If you don't want to use the CD player, please power it off . If you wouldn't use it for a long time, please take off the power plug.

## Playing Disc

- Press "▲" on the front panel or remote to open the tray , then OSD will show OPEN.
- Put the Disc in tray. Make sure the side with printed label upward, see below diagram:



Printed side upward

- Press "▲" on the front panel or remote to close the tray, then OSD will show CLOSE and then LOADING. After it read the information of the Disc, the OSD will show PLAY & it will start to play the Disc.
- Press "▶||" on the front panel or remote you can play the whole Disc & you can also use number keys on remote to select any track you want. You can also use "◀◀ ▶▶" on the front panel or remote to play previous track or next track, and use "◀◀ ▶▶" on remote to select a certain section you want to play.

## Stop and Pause:

- When playing the disc, press the button "■" on front panel/remote control to stop playing, the icon on the display changes from "▶" to "■", and the chapter time and scrolling bar stop running. If press the button "▶||" on front panel/remote control this time, the Disc starts to play from the 1st chapter;

- When playing the disc, press the button "▶||" on front panel/remote control to pause, the icon on the display changes from "▶" to "||" while chapter time and scrolling bar pause. If press the button "▶||" on front panel/remote control this time, the disk replays from where it is paused and continues to run.

## Repeat playing

- Press REPEAT button on remote for one time, CD player will go into single track replay and the OSD will show REP. ONE. If you press REPEAT for the 2nd time, CD player will replay all the Disc and the OSD will show REP. ALL. If you press REPEAT for the 3rd time, it will cancel the repeat playing and the OSD will show REP. OFF.
- For the section which you want to repeat playing, please press A-B button on remote for selecting the start point of the repeated section and the OSD will show A Point, press it again for the stop point you want, the OSD will show B Point, in this way the selected section will be play repeatedly. Repress the A-B button to cancel section repeat playing and the OSD will show AB OFF.

## Track selection

- Press number 0~10+ buttons on remote for selecting the track you want. When playing CD and HDCD Disc, if you want to play track # 5, press button # 5 on remote, press button # 0 for playing track # 0, press button # 10+ plus button # 5 for playing track # 15. When P3 Disc, press button # 10+ twice plus press button # 5 for playing track #25.

## Source selection

- TY-50 CD player supports 3 kinds of input sources: Optical, Coaxial, and CD. Press SOURCE on front panel or remote, the OSD will show OPT, play it twice, the OSD will show CD & play it 3 times, the OSD will show COAX, you can select the source you need.

## Time display

- CD player can show the current playing time. Press DISPLAY button on remote, the OSD will show the remaining time of the playing tack. Press twice of DISPLAY button, the OSD will show the whole playing time of the Disc. Press 3 times of Display button, it will show the whole remaining time of the Disc.

## USB Disk/T-Flash Card Play

- In order to make USB Disk or T-Flash Card play normally, please format them in FAT32 or exFAT formats, and please put the chapter files of such forms as WAV, FLAC, APE, and MP3 only.
- Normally, after inserting the USB Disk or T-Flash Card with chapters into their corresponding slots, the machine will automatically switch to play the corresponding audio source. If the machine failed to do so, please press the SOURCE key on front panel or remote, it will start to play automatically after choosing USB or TF audio TF audio source.

## Digital Audio Play

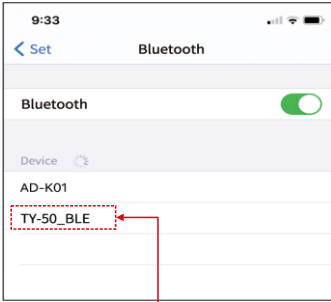
- This machine supports digital input at a maximum sample rate of 24 Bit (192 kHz);
- Choose the audio source OPT or COAX by pressing the SOURCE key on front panel or remote.

## Main specification :

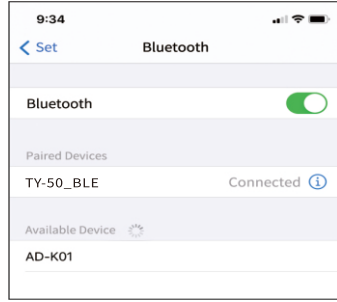
1. Output level:  $2V \pm 1.7\text{dB}$ (1KHZ)
2. Channel unbalance degree:  $\leq 1\text{dB}$ (1KHZ)
3. Crosstalk:  $\geq 104\text{ dB}$ (1KHZ)
4. Frequency response: 20Hz~20KHz(+0/-1dB)
5. S/N:  $\geq 108$  (A weighted)
6. THD:  $\leq 0.002\%$ (1KHZ)
7. Voltage: ~110V(60Hz)/220V(50Hz)
8. Unit size: 444x107x363mm
9. NW.: 8.3KGS

## Wireless Transmission of Mobile Phone Audio:

- (1) Choose the audio source BT on front panel or remote.
- (2) Switch on Bluetooth on Mobile Phone, click the matching connection after searching TY-50, and then, chapters can be played on your Mobile Phone after connecting successfully.



Connect



## APP Instruction:

In order to make you have a good machine experience, we specially and carefully developed the mobile APP that matches it as a wireless control. You can realize turn ON/OFF, and operation for all the functions by mobile phones.

If you are controlling the machine by the APP for the first time, you need to carry out the steps of (1), (2), and (3). Thereafter, you

Only need to carry out the step (3):

- (1) Make the machine under the normal working condition;
- (2) After the network of mobile phone is available, scan the QR Code on packing box, scan and download the APP to finish the installation.
- (3) After initiating the APP, search equipment TY-50 and click it to match, then the mobile phone will switch to the audio source synchronizing to the machine automatically, and after that, you can control the machine through your mobile APP.

**Note: For some types of mobile phones, no Bluetooth music can be provided by only initiating the APP directly, you need to initiate the setting of Bluetooth and find the machine model without the suffix of “BLE”, and then reconnect the machine to provide Bluetooth music!**

- (4) For more operating details of the APP, please refer to the Official Website of TONE WINNER and relevant contents are supported and served under this product.

**\*The specification of this product is subjected to change without prior notice!**



## Problem Shooting List :

Before contact repair person, please use below chart for checking the problem and its solution:

Problem	Reason	Solution
No display on OSD	Power cord is loose	Plug in the power cord firmly.
	Didn't press the power button	Press the power button.
	Fuse on rear panel burned out	Replace with a same specification fuse.
No sound	Audio connecting cable is loose	Reconnected the cable.
	The connected device is not set correctly.	Reset the audio input channel of the connected device.
Output sound is distorted or on and off	Audio cable is loose	Reconnect the cable firmly.
	The Disc is dirty	Clean the Disc.
OSD shows UN DISC	The DISC format is unreadable	Put in a readable Disc.
OSD shows NO DISC	No Disc	Put in a Disc
	Disc is upside down	Keep the printed label side upward.
	The Disc is dirty	Clean the Disc.
	The Disc is damaged	Change a good Disc.
No response when pressing remote	The remote is not pointed to the IR receiving window of CD player	Point the remote to the IR receiving window of CD player.
	The distance from remote to CD player is too far away	Suggest to distance between remote and CD player is within 7 meters.
	Running out of batteries	Change with new batteries.
No response when press buttons on front panel	Power supply is not stable or too much static electricity	Reboot.

# NOTES





Scan QR code

**Guangzhou Tonewinner Electronics Co., Ltd**

Tel: 86-20-34797660/34796146

Web: <http://www.tonewinner.com>

Add: No.1, Hongsheng 3

Road, Dashi, Panyu, Guangzhou, 511430, China